



www.eambes.org

EAMBES completes its first year of activity

The first year of EAMBES (actually one and half years) has focused on getting EAMBES registered under Belgian law, recruiting the Founding Members, carrying out the first proper elections for officers and council members for 2005, and on launching the activities included into the mission and objectives of EAMBES.

What will EAMBES do

EAMBES promotes MBES in the creation of the European Higher Education Area, the creation of the European Research and Innovation Area, and the use of health technology in biology, medicine and healthcare.

Structure and dues of EAMBES

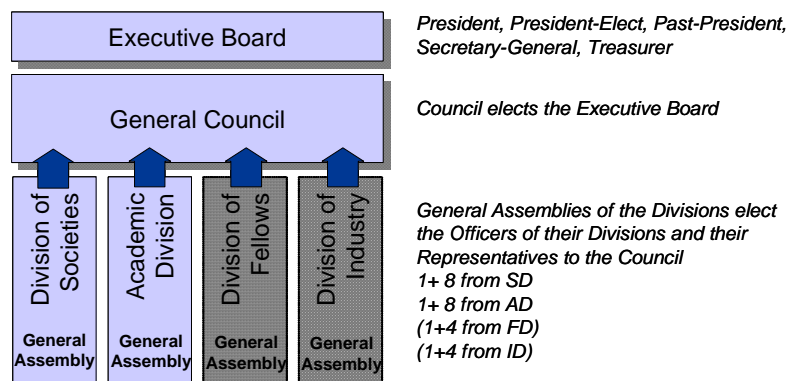
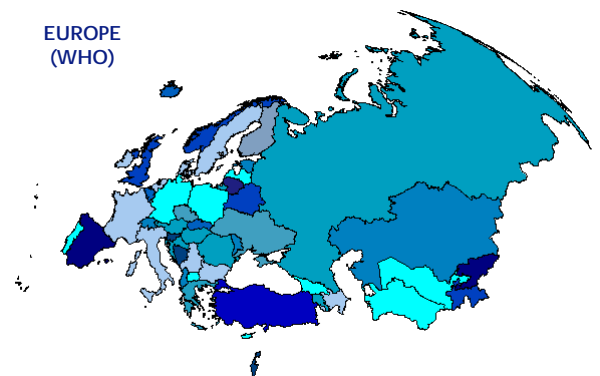
The European Alliance for Medical and Biological Engineering was inaugurated in Frankfurt, Germany, June 14-15, 2003. Its membership at the end of 2004 comprised 24 societies of which four are transnational societies and 26 academic MBES programs. EAMBES is registered since mid-2004 as an "International non-profit Association according to Belgian Law, IVZW". Our definition of Europe is the one used by WHO.

EAMBES was created on two principles:

- EAMBES will not compete with existing societies in Europe, and
- EAMBES adds value in the European scene.

The expectation is that working together in Europe as *one MBES community* will ultimately benefit us all. The EAMBES structure is based on multiple categories of membership in order to accommodate all needs. Initially a Division for Societies and a Division for Academic Programmes and Research Institutes were created. The Division for Fellows will be created in 2005.

The governance structure comprises an Executive Board that runs the Alliance, a General Council as the governing body of the Alliance and the Divisions that each elect their representatives to the General Council. The term of the President is only one year. But as the president first serves as president-elect and after her/his term as past-president she/he will be



intimately involved with the running of the Alliance for three years. The term of the Secretary-General, Treasurer and General Council members is two years.

The dues for members have been set as follows:

- Societies 2 Euro / member
- Academic programs & Research Institutions 200 Euro

In addition the dues for members from non-EU member countries will be proportioned based on the ratio of their GDP / capita over the EU 15 average.

EAMBES Statutes

The statutes that were approved in the inauguration meeting have been reorganised into a Constitution that has been approved by the Belgian Ministry of Justice as part of the registration process. The remaining parts of the statutes are called Bylaws and they provide more detail to the general articles of the constitution and all governance material for the divisions. A draft of the Bylaws was discussed in the last General Council meeting in Eindhoven, December 16, 2005. A formal email ballot on its acceptance will be organised in early 2005. Please note that no changes have been made to the contents of the statutes that were approved in Frankfurt in 2003. The material has only been reorganised to comply with the requirements of Belgian law.

Division of Fellows

The Eindhoven meeting also discussed the setting up of the Division of Fellows and agreed on the principles. Based on that a search committee will be appointed by the incoming President (Jos Spaan) to propose 20 persons that together with the search committee members will form the founding fellows.

EAMBES General Council and Officers 2005

In late 2004 the General Council members elected the Executive Board members to replace the interim board elected in Frankfurt. The voting was very tight and the response from the Council very good. Similarly the two divisions elected their officers and representatives to the General Council. The resulting list of elected persons is shown below.

Executive Board 2005	Jos Spaan, the Netherlands ¹ , President Jos vander Sloten, Belgium, President-Elect Helmut Ermert, Germany, Secretary-General Enrique Gomez, Spain, Treasurer Niilo Saranummi, Finland, Past-President
General Council 2005	Dan Adam, Israel Katarzyna Blinowska, Poland (until 2006) Marcello Bracale, Italy Vera Dammann, Germany (until 2006) Gerard Gimenez, France Hiie Hinrikus, Estonia Jiri Holcik, Czech Republic (until 2006) Ratko Magjarevic, Croatia (until 2006) Alexandru Morega, Romania (until 2006) Joachim Nagel, Germany (until 2006) Marc Nyssen, Belgium Christian Roux, France Maria Siebes, the Netherlands

¹ The country affiliation is added for clarity and does not infer that the person has been elected as a representative of that country.

	<p>Wen Wang, UK Marco Viceconti, Italy (until 2006) Jan Wojcicki, Poland (until 2006)</p> <p>Nicos Maglaveras, Greece, Chair of Society Division Dick Slaaf, the Netherlands, Chair of Academic Division</p>
Officers of the Divisions	<p><i>Society Division</i> Nicos Maglaveras, Greece, Chair Patrick Prendergast, Ireland, Vice Chair Thomas Becks, Germany, Secretary / Treasurer Joe Barbenel, UK, Past-Chair</p> <p><i>Academic Division</i> Dick Slaaf, the Netherlands, Chair Dan Adam, Israel, Vice-Chair Pierre Le Beux, France, Secretary / Treasurer Joachim Nagel, Germany, Past-Chair</p>

EAMBES membership

The list of member by end of 2004 is given below. All these members will be known as Founding Members of EAMBES.

National Societies

Österreichische Gesellschaft für Biomedizinische Technik -ÖGBMT
Belgian Society for MBEC
Croatian Medical and Biological Society
Cyprus Society of Medical Physics and Biomedical Engineering
The Danish Society for Biomedical Engineering
Estonian Society for Biomedical Engineering and Medical Physics
Finnish Society for Medical Physics and Medical Engineering
Société Française de Génie Biologique et Médical - SFGBM
Association pour l'Informatique Médicale
BIOMAT
DGBMT German Association for Biomedical Engineering within VDE
ELEBIT, Greece
Biomedical Section of the Hungarian Society of Measurement, Automation and Informatics
Israel Society for Medical and Biological Engineering
Netherlands Society for Biophysics and Biomedical Engineering
National Society for Medical Engineering and Biological Technology
Yugoslav Society for Biomedical Engineering and Medical Physics - YUBEMP
Sociedad Espanola de Ingenieria Biomédica
Swiss Society for Biomedical Engineering
Institute of Physics and Engineering in Medicine - IPEM

Transnational Societies

European Society for Artificial Organs - ESAO
European Society for Engineering and Medicine -ESEM
IEEE EMBS Europe
European Society of Biomechanics

Academic Programs and Research Institutes

Katholieke University of Leuven
VSB – Technical University of Ostrava - VSB-TUO
Czech Technical University in Prague
Aalborg University
Tallinn University of Technology - TTU
University of Oulu
CERMEP – Imagerie du vivant
Anhalt

University of applied Sciences Giessens Friedberg - FH G-F
Universität Stuttgart - U-STR
Aristotle University - AUTH
Foundation for Research and Technology - FORTH
Technion – Department of Biomedical Engineering - T-BME
Gruppo Nazionale di Bioingegneria - GNB
Istituto di Fisiologia Clinica CNR - IFC-CNR
Academisch Ziekenhuis bij de Universiteit van Amsterdam - AMC
Eindhoven University of Technology - TU/e
Institute of Biocybernetics and Biomedical Engineering PAS - IBBE PAS
Warsaw University - UW
Medical Bioengineering Faculty – Gr.T.Popa University of Medicine and Pharmacy Iasi
Faculty of Electrical Engineering, Belgrade - ETF-BEG
Technical University of Kosice
Universidad Politecnica de Madrid - Bioeng. and Telemedicine Dept.
University of Zaragoza - UZ
Queen Mary University - IRC in Biomedical Materials
Queen Mary and Westfield College, University of London - Medical Engineering Division

The Eindhoven meeting discussed an action plan to continue recruiting members to both divisions. A new membership campaign will be launched in early 2005.

Earlier in 2004 the General Council meeting decided in Ischia that no membership dues will be invoiced in 2004. In 2005 dues will be invoiced.

EAMBES will be applying for membership in IFMBE in 2005. Several national MBES societies have expressed a concern that they do not want to pay twice for the right to be a member of IFMBE. A solution to the “double payment issue” has been sought. The proposal that was presented in Eindhoven is the following: EAMBES membership dues to IFMBE will be based on the number of members in those EAMBES member societies that are not affiliated with IFMBE. Consequently there will be no double payment.

Inputs to FP7

The European Commission has invited comments and proposals to the setting of the next Framework R&D Program. Having an influence on the Framework programs was one of the main motivations in setting up EAMBES. The Eindhoven meeting discussed this at length and decided that EAMBES should put forward an integrated MBES program proposal and created a small WG to take this forward.

The proposal is titled “Engineering for Health Platform” and was submitted by the end of 2004. The new Executive Board will follow this up in 2005.

Position Paper on MBES

Maria Siebes has been leading a small working group with the assignment to produce a position paper on MBES that EAMBES can use in its activities. A draft was discussed in Eindhoven and based on the comments received the paper will be finalised in early 2005.

ERA-NET

Christian Roux has the lead in this initiative. The aim is to apply for funding under the ERA-NET scheme for national research funding agencies in the MBES sector to coordinate their activities. The proposal has to be submitted by March 2, 2005. Several national funding agencies have agreed to join this proposal.

Biomedea - MBES Education

This activity thread is reported separately in more detail in this newsletter.

Niilo Saranummi
Past-President, EAMBES